

UTAHNS' VISION FOR 2050

PUBLIC LANDS



**Envision
Utah**

*Your Utah,
Your Future*



TABLE OF CONTENTS

Introduction

4

*Vision for
Public Lands*

5

*Where We Are
Today*

9

*People and
Process*

13

Utahns' Values

19

*Scenario
Summaries*

23

Survey Results

29

*Recommended
Strategies*

37



UTAHNS' VISION FOR 2050

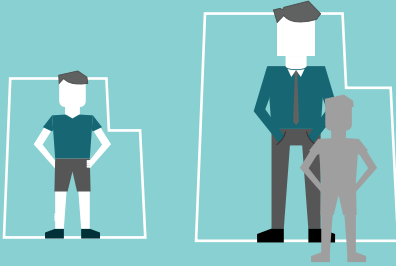
PUBLIC LANDS



YOUR UTAH, YOUR FUTURE

PROCESS

UTAH IS GROWING.



TODAY

There are three million people living in Utah.

2050

By 2050 there will be 5.4 million—the population will nearly double in 35 years!

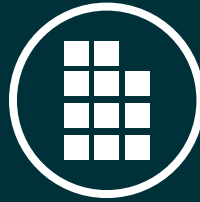
THAT MEANS

2 x the

HOMES JOBS SKIERS
CARS STUDENTS FOOD

OUR GOAL

HELP UTAHNS CREATE A VISION FOR UTAH'S FUTURE



11 TOPICS

Utahns' values guided the selection of 11 topics critical to the future of Utah.



UTAHNS' VALUES

Values studies told us not just what Utahns care about, but why they care about those things.



ACTION TEAMS

Experts from across the state studied the topics and helped shape potential scenarios for the future.

SCENARIOS



8 ACTION TEAMS

OF 400 EXPERTS WORKED FOR 18 MONTHS TO DEVELOP POTENTIAL SCENARIOS FOR UTAH'S GROWTH ACROSS EACH TOPIC.

YOUR UTAH, YOUR FUTURE SURVEY



53,000 UTAHNS

WEIGHED IN ON EACH TOPIC AND EACH SCENARIO, TELLING US WHAT THEY WANT UTAH TO LOOK LIKE IN 2050.

VISION FOR 2050



A COMBINATION

OF SURVEY RESULTS, VALUES, AND ACTION TEAM INPUT FORMED A VISION FOR UTAH'S FUTURE.

*Utahns love the scenic,
natural beauty of this
state.*

INTRODUCTION

OVER 70% OF UTAH IS PUBLIC LAND OWNED BY THE FEDERAL OR STATE GOVERNMENT. This land is renowned for its natural beauty. There are many competing uses for these millions of acres, ranging from solar arrays, wind farms, and gas wells to habitat, grazing, watersheds, and recreation.

UTAHNS WANT TO USE PUBLIC LANDS FOR A BALANCE OF VARIOUS USES, WHILE REMAINING GOOD STEWARDS OF THE ENVIRONMENT. With these vast areas of land, Utahns specifically want to maintain habitats, watersheds, and the natural beauty of the environment; provide recreation and opportunities to enjoy the outdoors with family and friends; and promote economic development through energy production, grazing, and tourism.

, YOUR FUTURE

VISION FOR PUBLIC LANDS



THE VISION

Utahns envision responsibly using the state's abundant public lands for many different purposes. They see the lands being managed to preserve natural ecosystems and watersheds, while still providing access to recreation that they can enjoy with family and friends. They also envision using these lands for grazing and other agricultural purposes, as well as for the responsible development of energy, including fossil fuels and renewables. Utahns see local communities thriving because of the economic benefits provided by public lands.



GOALS

- 1** Improve collaboration to establish a balanced mosaic of appropriate uses of these lands.
- 2** Preserve scenic beauty for future generations.
- 3** Maintain and improve habitats, ecosystems, and watersheds.
- 4** Ensure access to a wide variety of recreational opportunities.
- 5** Increase Utah's local food production and food self-sufficiency.
- 6** Promote energy self-sufficiency through the development of a variety of energy sources.
- 7** Foster job growth and economic development.

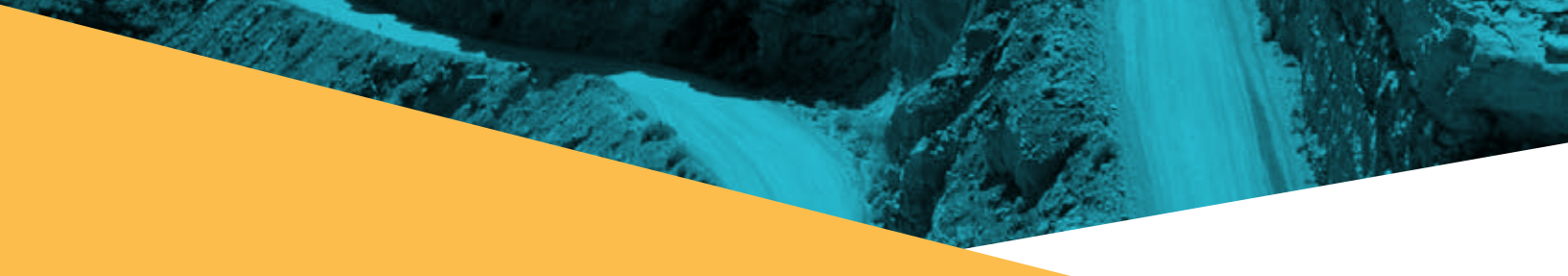
KEY STRATEGIES

- 1** Collaboratively and efficiently determine the appropriate locations for various uses (recreation, agriculture, preservation, energy, etc.) of Utah's public lands.
- 2** Identify, preserve, and provide access to Utah's natural, historic, and cultural treasures for today's residents and for future generations.
- 3** Create and implement a plan to ensure adequate recreational access and facilities (e.g., campgrounds, trails, picnic areas, and parking lots) are available to maximize Utahns' access, promote tourism, and minimize crowding and overuse.
- 4** Manage grazing and agriculture to improve rangelands and watersheds and promote food production in Utah.
- 5** Promote energy development (both fossil fuels and renewables), while mitigating impacts to ecosystems, watersheds, and airsheds.
- 6** Consolidate and improve the location of state-owned lands through land trades in order to promote Utah's interests and enhance recreation, energy development, agriculture, and ecosystem health.

For more details on these and other strategies, see the Recommended Strategies section beginning on p. 37.

BACKGROUND:

WHERE WE ARE TODAY



**UTAH'S PUBLIC LANDS—
FROM ITS RED-ROCK
DESERTS TO ITS ALPINE
MOUNTAINTOPS—HAVE
SHAPED CITIES, TOWNS,
AND COMMUNITIES IN
MANY WAYS.**

Utahns have a variety of perspectives about the significance of these public lands. To Utah's indigenous peoples, many of these lands are held sacred. To Utahns who descend from Mormon pioneers and early settlers, these lands provided a safe haven for their ancestors and created a culture, history, and economy unique to Utah. For many Utahns, these lands are a place to enjoy, recharge, and relax. And for others, they are the source of their livelihood and their ability to support their families. Much of the state's watersheds and ecosystems are found on public lands. As the state grows, the choices Utahns make about how to manage these lands will influence the economy, quality of life, and identity of today's residents and of future generations.

Public land is the land owned by the state or federal government. These lands make up more than 70% of Utah and include National Forests, Wilderness Areas, state and national parks and monuments, School and Institutional Trust Lands, lands managed by the Bureau of Land Management, etc.

Utah's public lands have many purposes and uses that sometimes compete with one another. In the future, these uses will also be affected by the increased needs and demands of a growing population and rising numbers of tourists. How Utahns balance the many uses of public lands affects ecosystem health, recreation, water supply, energy production, agriculture, and Utah's economy, particularly in the rural parts of the state.

LAND OWNERSHIP AND MANAGEMENT IN UTAH

BUREAU OF LAND MANAGEMENT (BLM)

Through the BLM, the federal government manages about 60% of the public lands in Utah. BLM lands are managed for multiple uses, ranging from recreation, habitat preservation, and wilderness to grazing, energy, and mining.

NATIONAL FORESTS

Through the U.S. Forest Service, the federal government manages about 21% of Utah's public lands. Because the lumber industry in Utah has significantly declined, these areas are now mainly used for recreation and habitat preservation. National Forests are also used for limited amounts of mining, grazing, and energy development.

WILDERNESS AND PARKS

Approximately 12% of Utah's public lands are Wilderness, Wilderness Study Areas, state parks, and national parks and monuments. These areas are largely managed to preserve natural character and for recreational use. Wilderness Areas—which can exist inside National Forests, monuments, or parks or on land managed by the BLM—have significantly more land-use restrictions than state or national parks. Wilderness Areas prohibit new roads and any vehicle traffic (including bicycles). Land-use restrictions in state and national parks vary.

SCHOOL AND INSTITUTIONAL TRUST LANDS

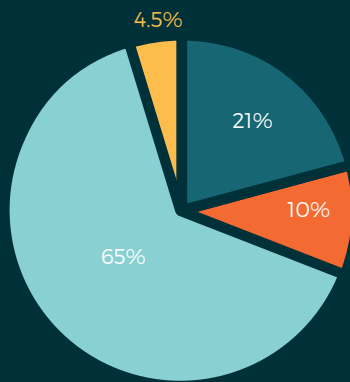
Almost 13% of Utah's public lands are State of Utah School and Institutional Trust lands. When Utah became a state, Congress granted scattered parcels of land to Utah, from which revenue could be generated to support state institutions, including public schools, hospitals, teaching colleges, and universities. Today these lands generate revenue primarily for public schools as they are sold or leased for agriculture, grazing, mining, energy production, and other uses.

ENERGY DEVELOPMENT

Approximately 9% of Utah's public lands are leased for energy development—almost all for oil and gas. Much of this acreage is not actively used to produce energy because the cost of extraction is too high or because lessees are holding out for a more favorable market. Oil and natural gas deposits are found in only a few portions of Utah, and most known reserves are already leased. In the future, there will likely be few additional areas leased for oil and gas development. The largest concentration of oil and gas leases in the state is in the Uintah Basin, with other small areas scattered throughout the state. Public lands are also increasingly being used to produce renewable energy like wind and solar power.

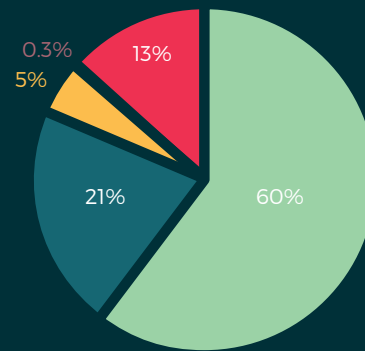
LAND OWNERSHIP AND MANAGEMENT IN UTAH

Utah Land Ownership



- Private
- State
- Federal
- Tribal

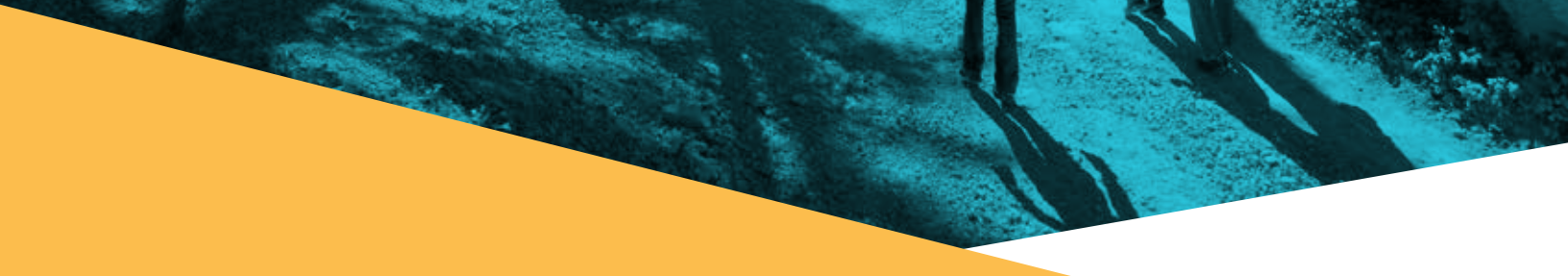
Utah Public Land Management



- BLM
- Forest Service
- National Parks
- State Parks
- State of Utah School and Institutional Trust Lands

HOW WE CREATED A VISION:

PEOPLE AND PROCESS



TO CREATE A VISION FOR THE FUTURE OF PUBLIC LANDS IN UTAH, A TEAM OF EXPERTS GATHERED OVER A TWO-YEAR PERIOD TO SHARE KNOWLEDGE AND EXTENSIVELY RESEARCH AND DISCUSS OPTIONS FOR THE FUTURE.

Members of the Agriculture, Public Lands, and Recreation Action Team were selected by Governor Gary Herbert and Envision Utah to represent a spectrum of professional experience and political affiliations. Team members included public lands experts, county commissioners, legislators, advocates, and others from across the state. From 2013 to 2015, the action team met to identify Utahns' choices related to public lands, create scenarios for public input, and synthesize a vision for the future. The process of creating this vision also included the following components:

- 1 A 2014 values study. This study was conducted by Heart+Mind Strategies to identify (1) what factors Utahns view as affecting their quality of life the most and (2) the underlying emotions and values tied to those factors. The study determined that Utahns want public lands managed to maintain habitats and natural beauty, to provide recreation and opportunities to enjoy the outdoors with family and friends, and to promote jobs and economic development that allow them to better provide for their families. (More information on the values study can be found in the Utahns' Values section on p. 19.)
- 2 The "Build Your 2050 Utah" web app. This app allowed Utahns to balance uses on public lands and interactively learn about the outcomes of different choices. More than 3,000 people across Utah gave input through the app. Most shared a strong desire to collaboratively balance a variety of uses for public lands.

The action team used this information to create four different scenarios for the future of public lands in Utah. The four scenarios represented varying levels of cooperation and strategies that resulted in different uses of public lands. These scenarios (p. 23) were presented to the public in the , Your Future survey in spring 2015, and 52,845 Utahns weighed in.

After receiving public input on the four public lands scenarios, the action team met to frame a vision, including goals and strategies, to achieve what Utahns said they wanted for public lands in 2050.

ACTION TEAM MEMBERS

CHAIRS



**LEONARD
BLACKHAM**

*Former Commissioner, Utah
Department of Agriculture
and Food*



**KATHLEEN
CLARKE**

*Director, Public Lands Policy
Coordination Office*



**WENDY
FISHER**

*Executive Director, Utah Open
Lands*



**BRAD
PETERSEN**

*Director, Utah Office of
Outdoor Recreation*

Alma Adams*Commissioner, Iron County***Bruce Adams***San Juan County Council***LuAnn Adams***Commissioner, Utah Department of
Agriculture and Food***Brandie Balken***Equality Utah***Brad Barber***Barber Consulting***Roger Barrus***Utah House of Representatives***Mallory Bateman***Utah Foundation***John Bennett***Utah Quality Growth Commission***Scott Chew***Cattle and Sheep Rancher; Utah House of
Representatives***Gene Ciarus***Grand County Council***Mark Clemens***Utah Chapter, Sierra Club***Mark Compton***President, Utah Mining Association***Larry Crist***U.S. Fish and Wildlife Service***Jim Dabakis***Utah Senate***LaNiece Davenport***Wasatch Front Regional Council***Joan Degiorgio***Nature Conservancy***Jack Draxler***Utah House of Representatives***Hans Ehrbar***University of Utah Department of
Economics***John Evans***Petzl Climbing Equipment***John Fairchild***Utah Division of Wildlife Resources***David Garbett***Southern Utah Wilderness Alliance***Julia Geisler***Executive Director, Salt Lake Climbers
Alliance***Kerry Gibson***Commissioner, Weber County***Laura Hanson***Executive Director, Jordan River Commission***Jon Hardman***Natural Resource Conservation Service*

David Hinkins*Utah Senate***Sarah Hinners***University of Utah Metropolitan Research Center***Lynn Jackson***Grand County Council***Layne Jones***Mountain Accord***Peter Knudson***Utah Senate***Mike Kohler***Wasatch County Council***Ashley Korenblat***Public Land Solutions***David Livermore***Utah State Director, The Nature Conservancy***John Mathis***Utah House of Representatives***Chris McCandless***Sandy City Council***Kay McIlff***Utah House of Representatives***Tara McKee***Utah Office of Outdoor Recreation***Michael Merrill***Salt Lake Chamber***Thayne Mickelson***Utah Conservation Commission***Wayne Niederhauser***Utah Senate***Mike Noel***Utah House of Representatives***Ralph Okerlund***Utah Senate***Juan Palma***State Director, U.S. Bureau of Land Management***Randy Parker***Utah Farm Bureau***Ashley Patterson***Wasatch Community Gardens***Kent Peatross***Commissioner, Duchesne County***Julie Peck-Dabling***Salt Lake County Open Space and Urban Farming***Warren Peterson***Vice President, Farmland Reserve***Nathan Rafferty***President, Ski Utah***Curtis Rowley***Cherry Hill Farms***Dustin Rowley***Utah Association of Conservation Districts***Eric Sadler***Wasatch Mountain Club*

Douglas Sagers

Utah House of Representatives

Selma Sierra

*Director of Energy and Environmental
Policy, Energy Dynamics Laboratory*

George Sommer

Chair, Blue Ribbon Fisheries Commission

Mike Styler

*Director, Utah Department of Natural
Resources*

Ed Sunderlan

Sanpete County Farmer

Brent Tanner

*Executive Vice President, Utah Cattlemen's
Association*

Gordon Topham

Commissioner, Sevier County

Elizabeth Tubbs

Grand County Council

David Ure

Summit County Council

Ron Vance

*Recreational and Resource Manager,
U.S. Forest Service*

Vicki Varela

Managing Director, Utah Office of Tourism

Evan Vickers

Utah Senate

Logan Wilde

Morgan County Council

WHY PUBLIC LANDS MATTER:

UTAHNS' VALUES

In 2014, Envision Utah conducted a statewide values study to identify (1) what factors Utahns view as affecting their quality of life the most and (2) the underlying emotions and values tied to those factors.



UTAHNS CARE DEEPLY ABOUT THE STATE'S NATURAL LANDS.

Utahns want to use public and other natural lands for a balanced variety of purposes. Utahns primarily value having safe and secure communities, a strong economy with an affordable cost of living, and beautiful surroundings in which to enjoy time recreating with family and friends. Public lands—and how they are managed—affect all of these three overarching values: increased energy production and food self-sufficiency improve Utahns' sense of security; tourism, extraction industries, and grazing promote economic development; and public lands provide scenic beauty and outdoor recreation.

Rural Utahns also feel that the federal government's constraints on the use of public lands negatively affect things they care deeply about. They believe these constraints harm the rural economy and prevent their children from finding jobs in their communities. As a result, rural Utahns feel they have lost control over things that should be within their rights to control, and they have a strong sense that they have lost their personal freedom.

Utahns care deeply about the state's natural lands. Protecting the environment and beauty of these lands makes Utahns feel more responsible and gives them a sense of being good stewards. Outdoor recreation on public lands provides opportunities for Utahns to spend time with family and friends in the great outdoors, giving Utahns peace of mind and a sense of freedom and happiness. Utahns also believe that using public lands for multiple purposes will maximize use of resources and promote tourism, leading to a strong economy that will allow their children to stay close to home. This in turn creates feelings of family love and financial security.

PUBLIC LANDS AND HAPPINESS, FREEDOM, AND PEACE OF MIND



“I want the state’s public lands managed to protect habitat and natural beauty so that I can enjoy the outdoors, spend time with family and friends, and be a good steward of my state. Protecting Utah’s scenic beauty gives me a sense of happiness, freedom, and peace of mind.”

PUBLIC LANDS AND FINANCIAL SECURITY



“I would like Utah’s public lands to be used for multiple purposes, balancing use of resources, tourism, and economic development in a way that protects the scenic beauty of my state. Using public lands for multiple purposes helps economic development in rural areas and allows my family to stay in our community, leading to feelings of family love, freedom, and financial security.”

CHOICES FOR THE FUTURE:

SCENARIO SUMMARIES

The following scenarios were created by the Agriculture, Public Lands, and Recreation Action Team to represent possible outcomes for Utah's public lands in 2050. The scenarios differed in how much public land was used for different purposes, including:

- Energy development
- Grazing
- Recreation
- Preservation

The scenarios were presented to the public as part of the , Your Future survey in spring 2015.

The scenarios were titled Allosaurus, Bonneville Trout, Seagull, Quaking Aspen, and Segó Lily (the state fossil, fish, bird, tree, and flower).

54% OF UTAHNS SELECTED THE SCENARIO PRESENTED IN BOTH SEAGULL AND QUAKING ASPEN.

ALLOSAURUS SCENARIO

More energy production, grazing, etc.; no new preservation



By 2050, more of our public lands are used for high-intensity purposes:

- Energy production (fossil fuels and renewables) and mining increase.
- Lands managed to preserve natural character (including wilderness) and low-impact recreation (hiking, fishing, etc.) stay the same.
- High-impact recreation (e.g., use of off-highway vehicles) increases.
- Grazing increases, without the use of new rotational techniques.
- Recreational facilities like trails and campgrounds do not significantly expand.

In comparison to today, by 2050:

- Statewide jobs, economic development, and tax revenue increase.
- Rural Utah jobs, economic development, and tax revenue increase, primarily in high energy-producing counties.
- Ecosystem health declines.
- The ability of watersheds to capture stormwater for water supply and flood prevention is lower.
- Our ability to meet our energy needs is greater.
- Our ability to meet our recreation needs is much lower.
- Conflicts between increasing numbers of recreational users and other users increase.

BONNEVILLE TROUT SCENARIO

Public lands are managed like today



By 2050, federal and state public lands in Utah are managed similar to today:

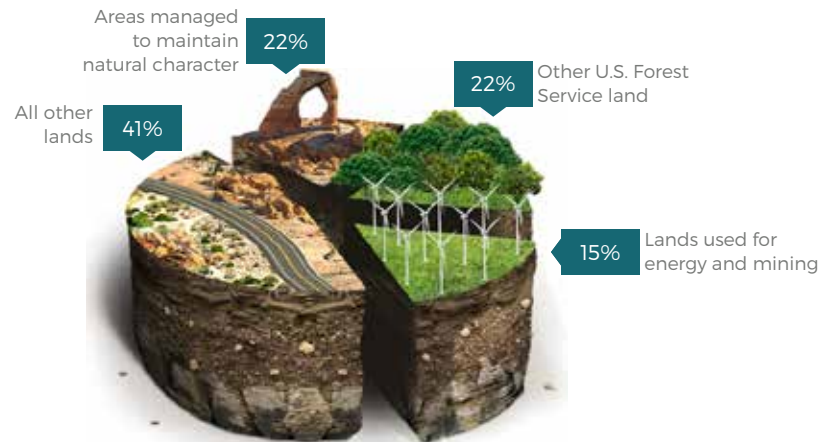
- Energy production (fossil fuels and renewables) and mining stay the same.
- Lands managed to preserve natural character (including wilderness) and low-impact recreation (hiking, fishing, etc.) stay the same.
- High-impact recreation (e.g., use of off-highway vehicles) stays the same.
- Grazing stays the same.
- Recreational facilities like trails and campgrounds expand at half the rate needed to accommodate increased demand.

In comparison to today, by 2050:

- Statewide jobs, economic development, and tax revenue stay the same.
- Rural Utah jobs, economic development, and tax revenue stay the same.
- Ecosystem health stays the same.
- The ability of watersheds to capture stormwater for water supply and flood prevention stays the same.
- Our ability to meet our energy needs is lower.
- Our ability to meet our recreation needs is lower.
- Conflicts between increasing numbers of recreational users and other users increase.

SEAGULL AND QUAKING ASPEN SCENARIO

Balance of high- and low-impact uses (preservation, energy, etc.)



Advocates for different uses of public lands compromise, and by 2050, Utah's public lands are used for a balance of high-intensity and low-intensity purposes. While lands managed to preserve natural character expand, we also allow for more agriculture, mining, and recreation in some areas. Energy production increases in some areas, even as we prohibit some lands from being used for energy development. Additional lands designated for preservation are balanced by an increase in lands that allow high-impact recreation, like the use of off-highway vehicles.

As a result:

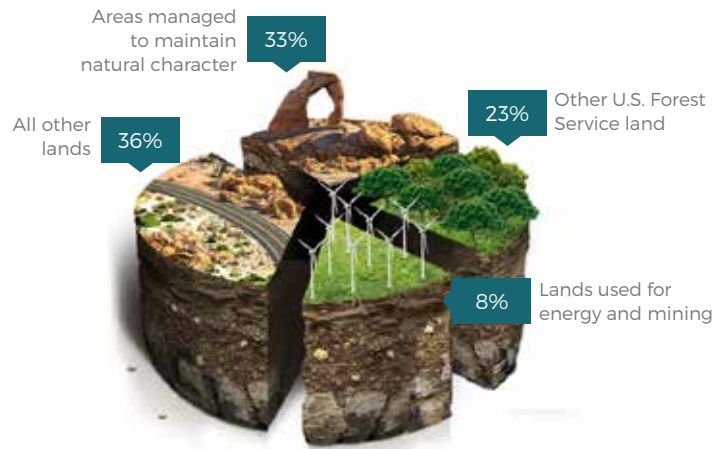
- Energy production (fossil fuels and renewables) and mining increase somewhat.
- Lands managed to preserve natural character (including wilderness) and low-impact recreation (hiking, fishing, etc.) increase somewhat.
- High-impact recreation (e.g., use of off-highway vehicles) increases somewhat.
- Grazing increases somewhat, and new rotational grazing techniques are explored to improve habitat and watershed functionality.
- Recreational facilities like trails and campgrounds expand to accommodate increased demand.

In comparison to today, by 2050:

- Statewide jobs, economic development, and tax revenue increase.
- Rural Utah jobs, economic development, and tax revenue increase.
- Ecosystem health improves.
- The ability of watersheds to capture stormwater for water supply and flood prevention is better.
- Our ability to meet our energy needs is greater.
- Our ability to meet our recreation needs is similar.
- Conflicts between increased numbers of recreational users and other users decrease.

SEGO LILY SCENARIO

More lands for nature and preservation; less energy production, grazing, etc.



By 2050, more of our public lands are used for low-intensity purposes:

- Energy production (fossil fuels and renewables) and mining decrease.
- Lands managed to preserve natural character (including wilderness) and low-impact recreation (hiking, fishing, etc.) increase.
- High-impact recreation (e.g., use of off-highway vehicles) decreases.
- Grazing decreases.
- Recreational facilities like trails and campgrounds expand to accommodate increased demand.

In comparison to today, by 2050:

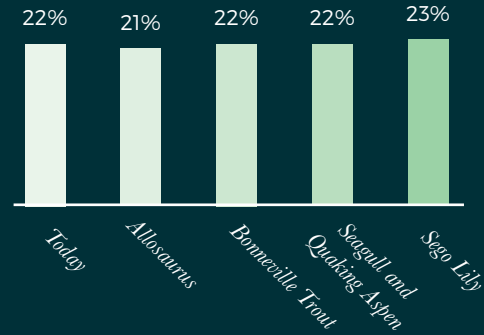
- Statewide jobs, economic development, and tax revenue decrease.
- Rural Utah jobs, economic development, and tax revenue decrease.
- Ecosystem health improves.
- The ability of watersheds to capture stormwater for water supply and flood prevention is better.
- Our ability to meet our own energy needs is much lower.
- Our ability to meet our recreation needs is the same.
- Conflicts between increased numbers of recreational users and other users decrease.

SUMMARY OF SCENARIOS

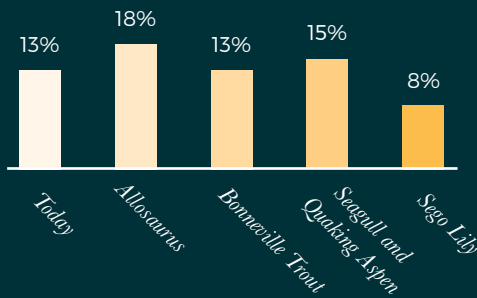
AREAS MANAGED TO MAINTAIN NATURAL CHARACTER



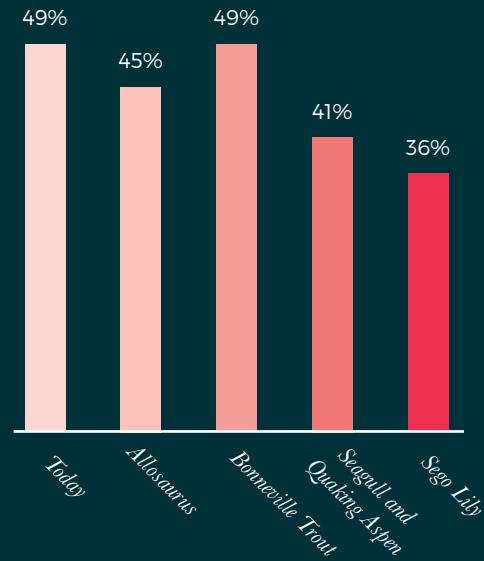
OTHER U.S. FOREST SERVICE LAND



LANDS USED FOR ENERGY AND MINING



ALL OTHER LANDS



, YOUR FUTURE

SURVEY RESULTS

In April and May 2015, 52,845 Utahns shared their voice through the , Your Future survey. Participants chose their favorite scenarios for public lands and other topics. After choosing their favorite scenarios, survey participants had the option to answer a series of questions to prioritize public lands among other issues, determine the most important outcomes related to public lands, and identify how willing they would be to take specific actions to ensure those outcomes. The survey results were cross-checked against a random-sample survey to ensure they represented the desires and opinions of Utahns.

1

WHAT UTAHNS WANT FOR PUBLIC LANDS

Utahns want their public lands to be managed differently than today. Most Utahns chose a scenario in which advocates for different uses of public lands compromise and by 2050 the lands are used for a balance of high-intensity and low-intensity purposes. While lands managed to preserve natural character expand, agriculture, mining, and recreation on public lands also expand. Energy production increases in some areas, even as energy development is prohibited on some lands.

2

WHY UTAHNS WANT IT

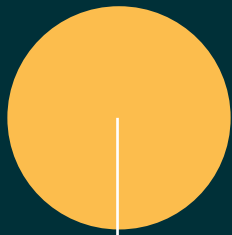
Utahns put a high priority on maintaining and improving ecosystems and watersheds. They also want to ensure that Utah is able to meet its own energy needs, that Utahns can enjoy the outdoors with family and friends, and that public lands contribute to a strong Utah economy that benefits individuals, families, and communities. Rural Utahns are more concerned than other Utahns about public lands being available for grazing and agriculture and maximizing rural jobs and economic development.

3

WHAT UTAHNS ARE WILLING TO DO

Utahns are very willing to prohibit intensive recreation (e.g., use of off-highway vehicles) and motorized vehicles on some lands. Utahns are also supportive of energy development and grazing on public lands in ways that are protective of ecosystem or watershed health and as long as they're not done in areas that should be managed to preserve natural character. Utahns are willing to support creating a new state or national park but are cautious about allowing significant new land-use restrictions.

WHAT UTAHNS WANT



54%

*Balance of high- and low-
impact uses (preservation,
energy, etc.)*

Seagull and
Quaking Aspen



29%

*More lands for nature and
preservation; less energy
production, grazing, etc.*

Sego Lily



11%

*More energy production,
grazing, etc.; no new
preservation*

Allosaurus



8%

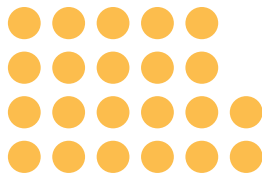
*Public lands are managed
like today*

Bonneville Trout

WHY UTAHNS WANT IT

(OR WHAT OUTCOMES UTAHNS EXPECT FROM PUBLIC LANDS)

Survey participants were asked to allocate 100 points across these outcomes based on which they considered most important.



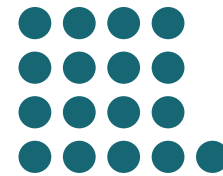
22%

Maintaining and improving ecosystem and watershed health



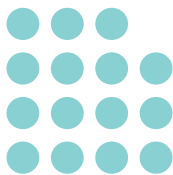
18%

Ensuring Utah can produce enough energy to meet its own needs



17%

Ensuring we have access for low-impact recreation (hiking, biking, fishing, climbing, backcountry winter sports, etc.) on public lands



15%

Maximizing statewide jobs and economic development



11%

Ensuring public lands are available for grazing/agriculture



11%

Maximizing rural Utah jobs and economic development

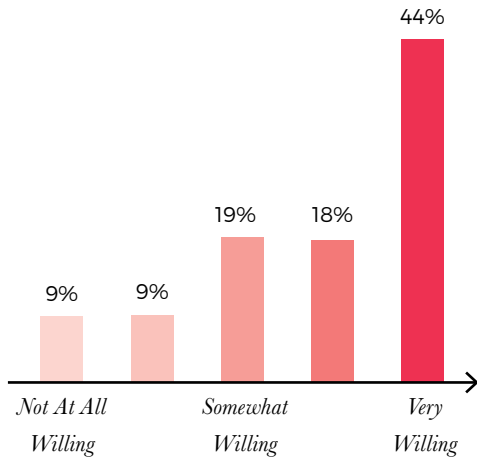


6%

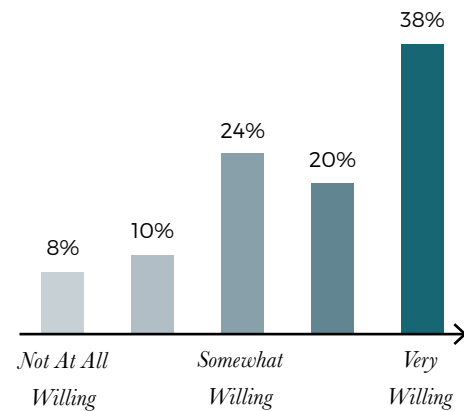
Ensuring we have access for high-impact recreation (off-highway vehicles, etc.) on public lands

WHAT UTAHNS ARE WILLING TO DO TO INCREASE UTAH'S PRESERVATION OF NATURAL AREAS

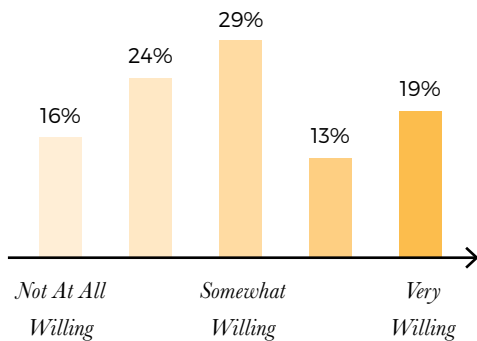
*We will not be able to do as much intensive recreation
(e.g., use of off-highway vehicles) on public lands.*



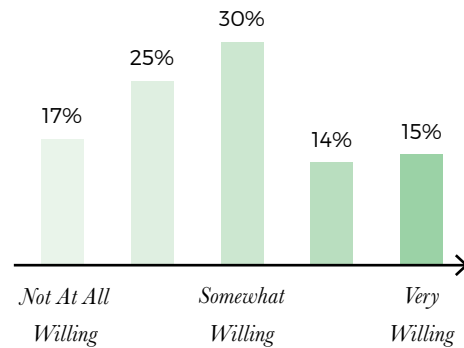
*We will not be able to develop as much access for
motorized vehicles to public lands.*



*We will not be able to develop some potential energy
sources (fossil fuels and renewables) on public lands.*



*We will not have as much grazing or agriculture
on public lands.*

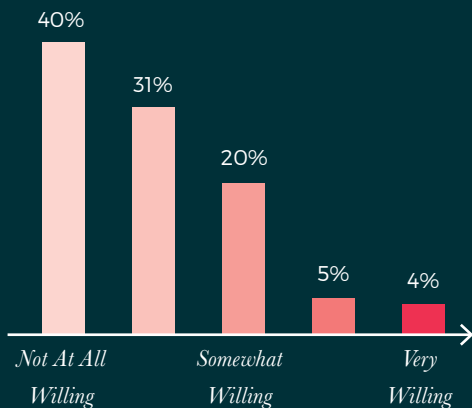


WHAT UTAHNS ARE WILLING TO DO TO INCREASE UTAH'S PUBLIC LAND USE

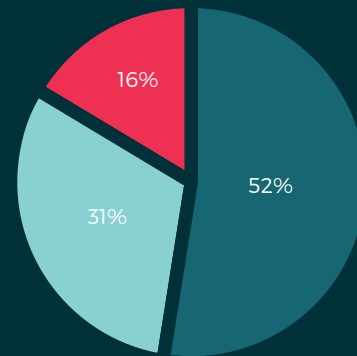
We will have to impact some undeveloped public land that otherwise would have been managed for natural characteristics or low-impact recreation (e.g., hiking).



Ecosystem and watershed health may decline in some places.



Support for new state or national park

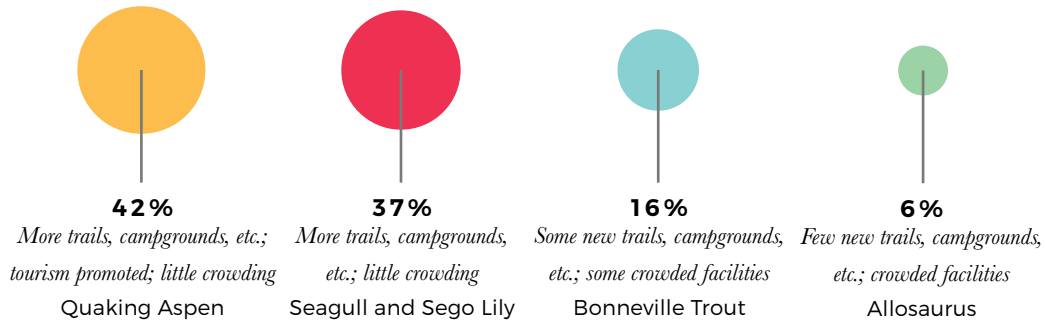


- Yes, I would support designating another state or national park in Utah.
- Yes, but only if it doesn't mean adding significant new land-use restrictions for that area.
- No, I would not support designating another state or national park in Utah.

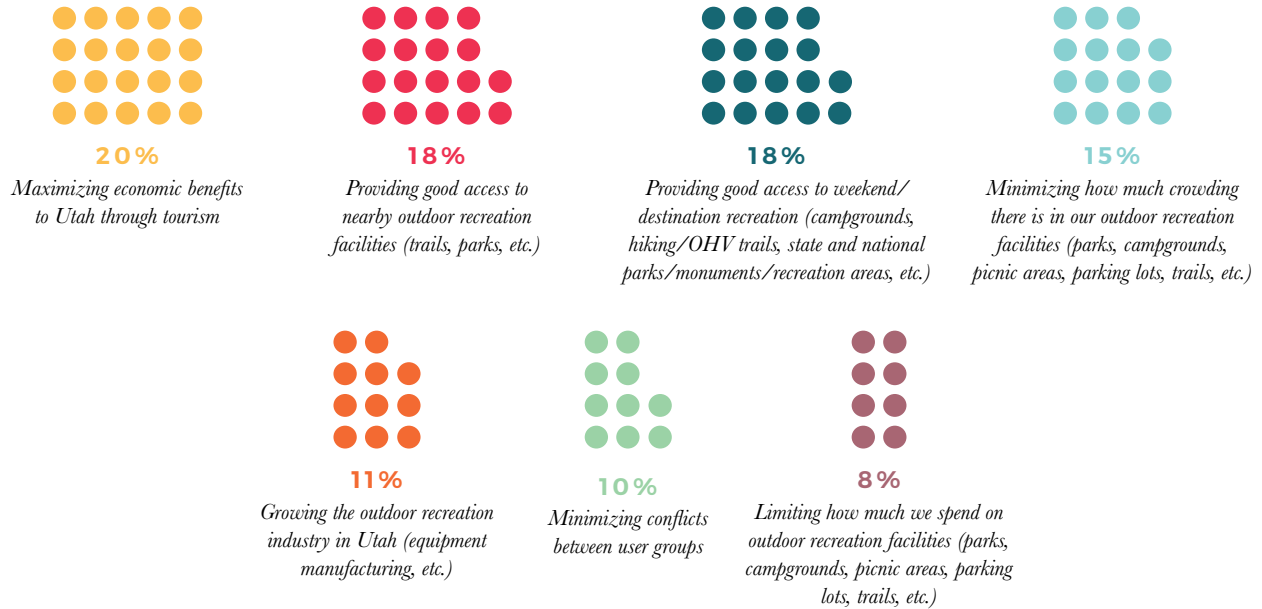
Over 80% of Utahns said they would support a new state or national park in Utah, though 31% say they support a new park only if no significant new land-use restrictions are added for that area.

SUPPORTING RESULTS FROM RECREATION

WHAT UTAHNS WANT



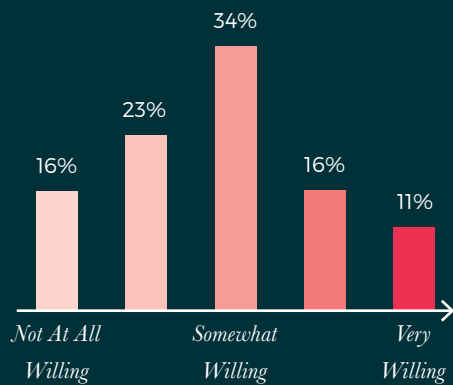
WHY UTAHNS WANT IT



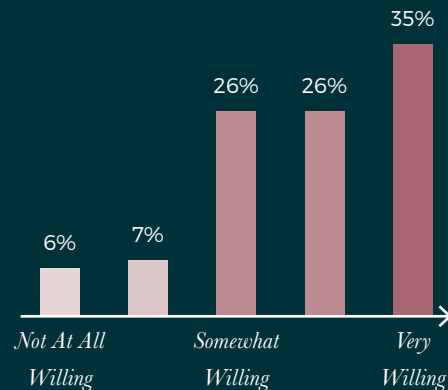
79% of Utahns expressed support for expanding Utah's recreational facilities to prevent crowding.

SUPPORTING RESULTS FROM ENERGY

More land will need to be used for natural gas wells, which have environmental impacts.



We will need to use some of our land for renewable energy production facilities like wind and solar farms, which will have environmental impacts.



Utahns are willing to use more land for renewable energy production and are also willing to use land for natural gas wells as long as it's done in an environmentally responsible manner.

REALIZING THE VISION:

RECOMMENDED STRATEGIES



- 1 Collaboratively and efficiently determine the appropriate locations for various uses (recreation, agriculture, preservation, energy, etc.) of Utah's public lands.**
 - a) Involve all affected parties, particularly local leaders and residents, to ensure all viewpoints are represented.
 - b) Establish a balanced mosaic of uses, each occurring in appropriate areas.
 - c) Quickly address Utahns' concerns, including the concern of providing economic opportunities to rural Utahns and their families.
 - d) Seek federal, state, and local legislation and policy changes as necessary.
- 2 Improve recreational access so Utahns and visitors can enjoy Utah's beautiful public lands.**
 - a) Create and implement a plan to ensure adequate recreational access and facilities (e.g., campgrounds, trails, picnic areas, and parking lots) are available to maximize Utahns' access, promote tourism, and minimize crowding and overuse.
 - b) Avoid alterations that unduly impact the natural character of public lands.
 - c) Provide places for high-impact recreation (e.g., use of off-highway vehicles) without unduly affecting ecosystems, watersheds, and other recreational users.
 - d) Investigate the possibility of adding a new state or national park to increase tourism revenue and alleviate crowding in existing parks.
- 3 Promote responsible development of energy sources (both fossil fuels and renewables).**
 - a) Avoid energy production in sensitive areas or popular recreation areas.
 - b) Implement energy production techniques that avoid, minimize, and mitigate impacts to ecosystems, watersheds, and airsheds.
- 4 Manage grazing and agriculture to improve rangelands and watersheds and promote food production in Utah.**
 - a) Improve rangeland management and explore new rotational grazing techniques to increase grazing efficiencies.
 - b) Partner with state and federal agencies to put some public lands into crop production.
- 5 Consolidate and improve the location of state-owned lands through land trades in order to promote Utah's interests and enhance recreation, energy development, agriculture, and ecosystem health.**
- 6 Identify, preserve, and provide access to Utah's natural, historic, and cultural treasures for today's residents and for future generations.**

